



**RME 005 A, Gas regulating
valve, solenoid actuated,
control range from 0.017 to 1.7
hPa l/s**

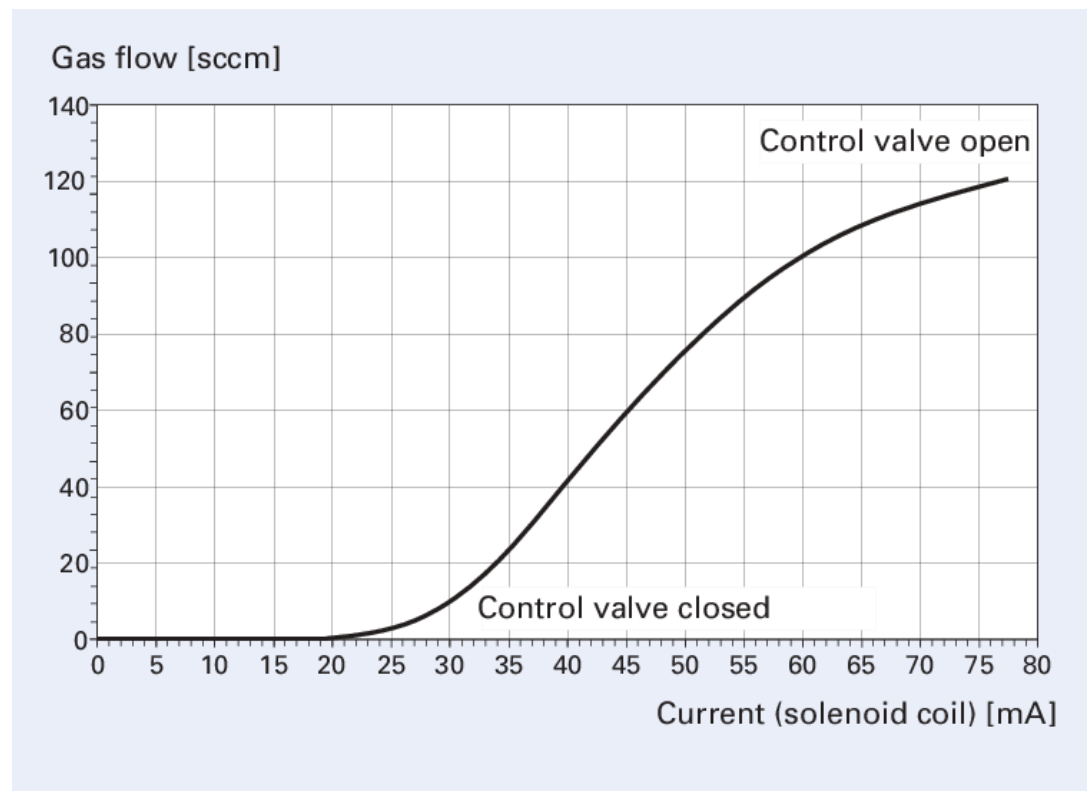




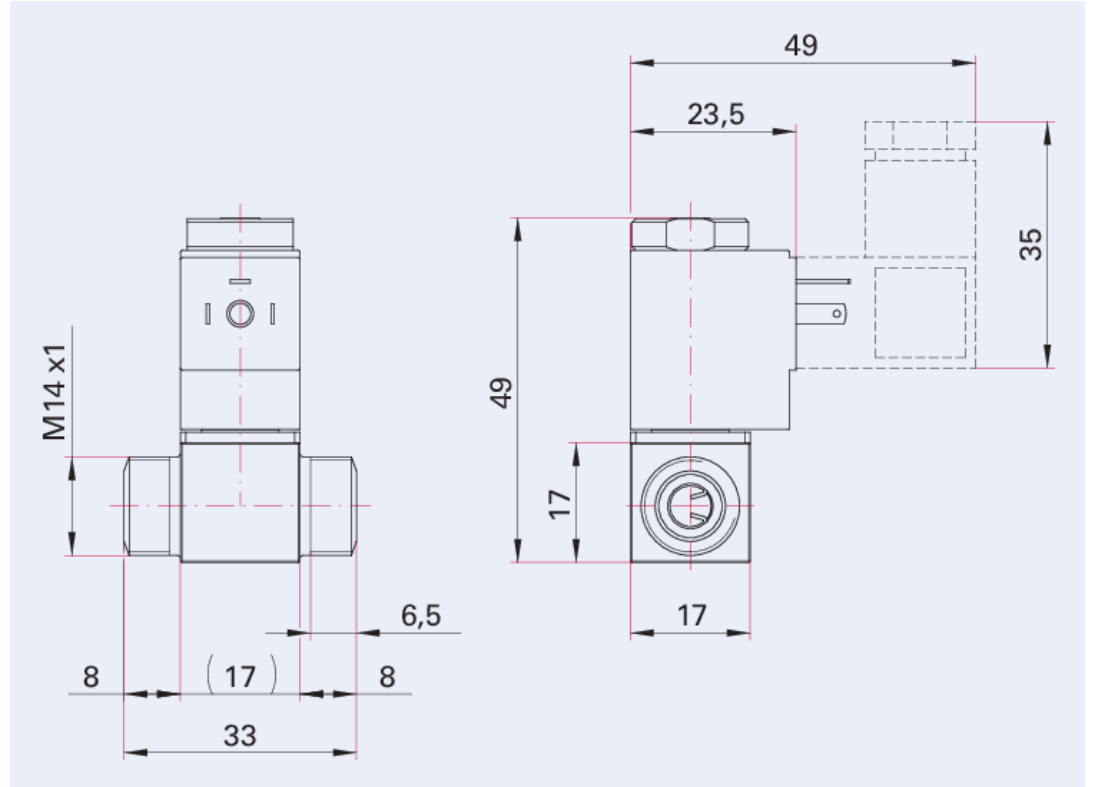
RME 005 A, Gas regulating valve, solenoid actuated, control range from 0.017 to 1.7 hPa l/s

- Two connections and a connection cable required as accessories
- Drive: Solenoid
- Regulating range from 0.017 to 1.7 hPa l/s
- Normally closed (n. c.)

Characteristics



Dimensions



Technical Data	RME 005 A, Gas regulating valve, solenoid actuated, control range from 0.017 to 1.7 hPa l/s		
Gas flow min. controllable	1.7 · 10 ⁻² hPa·l/s		
Gas flow max. controllable	1.7 · 10 ⁰ hPa·l/s		
Duty cycle	100 %		
Supply: Power consumption max.	2.5 W		
Control voltage	0 – 24 V DC		
Seal	FKM		
Ambient temperature	5 – 50 °C		
Housing	Stainless steel		
Actuator	Electromagnetic		
Tightness	1 · 10 ⁻¹⁰ Pa m ³ /s	1.33 · 10 ⁻⁸ Torr l/s	1 · 10 ⁻⁸ mbar l/s
Pressure max.	2,000 hPa 1,500 Torr 2,000 mbar		
Min. controllable gas flow	1.7 · 10 ⁻² hPa·l/s		
Max. controllable gas flow	1.7 · 10 ⁰ hPa·l/s		
Bakeout temperature: actuator, de-energized	80 °C 176 K -193.2 °F		
Pressure min.	1 · 10 ⁻⁸ hPa 7.5 · 10 ⁻⁹ Torr 1 · 10 ⁻⁸ mbar		
Weight	96 g		
Pressure max.	2,000 hPa		
Response time	30 ms		
Power consumption max.	2.5 W		
Connection flange	DN 5 mm M14x1 Thread		
Weight	96 g		

Order number	RME 005 A, Gas regulating valve, solenoid actuated, control range from 0.017 to 1.7 hPa l/s	
RME 005 A, Gas regulating valve, solenoid actuated, control range from 0.017 to 1.7 hPa l/s	PF I13 934	

Your Success. Our Passion.

We give our best for you every day –
worldwide!

Are you looking for an optimum vacuum solution?

Talk to us:

Pfeiffer Vacuum GmbH

Germany

T +49 6441 802-0

Or scan the barcode, to visit our web page:



<https://webportal.pfeiffer-vacuum.com/global/en/contact>



Errors and/or changes excepted. - 5/29/2024

Follow Us On Social Media
#pfeiffervacuum



PFEIFFER  **VACUUM**

www.pfeiffer-vacuum.com